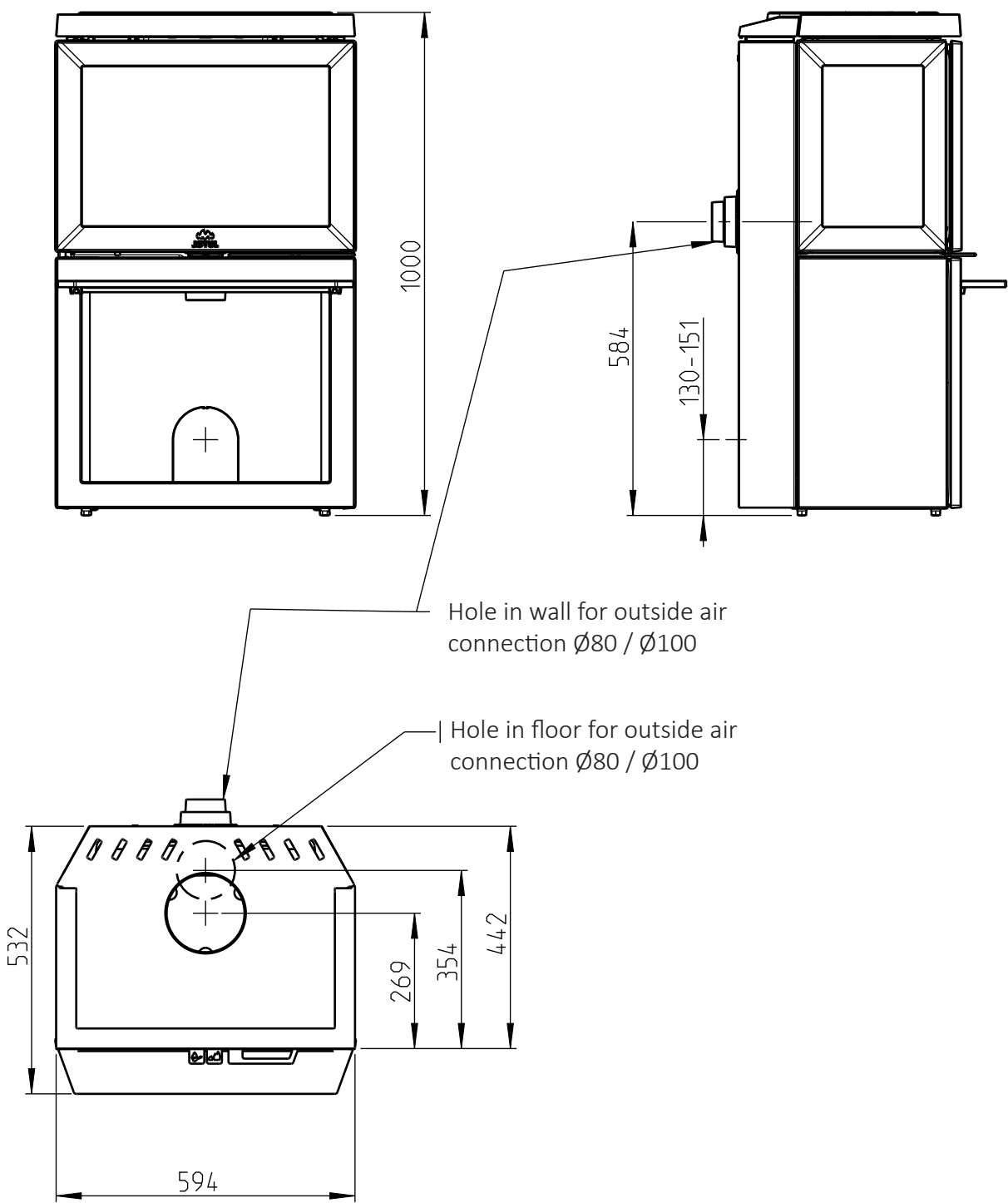
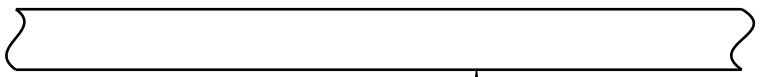
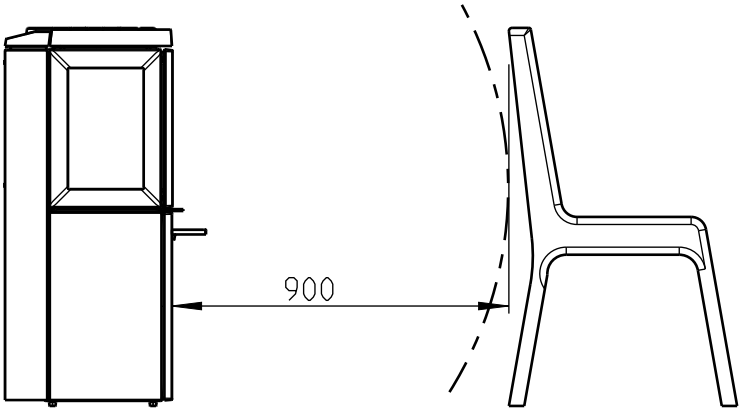


# JØTUL F 520 / JØTUL F 520 High Top



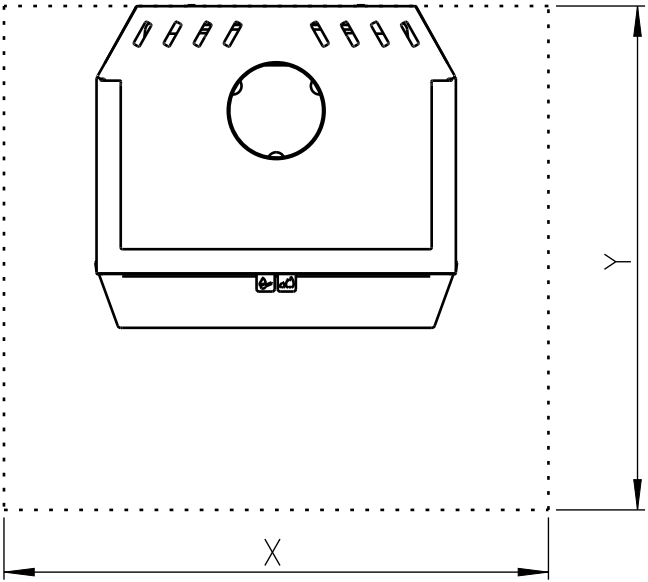
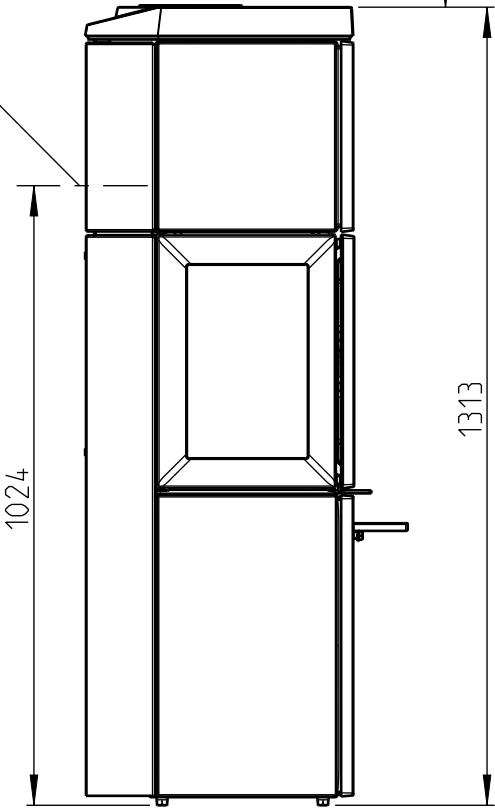
Minimum clearance from furniture/combustible materials



Minimum distance to ceiling

706

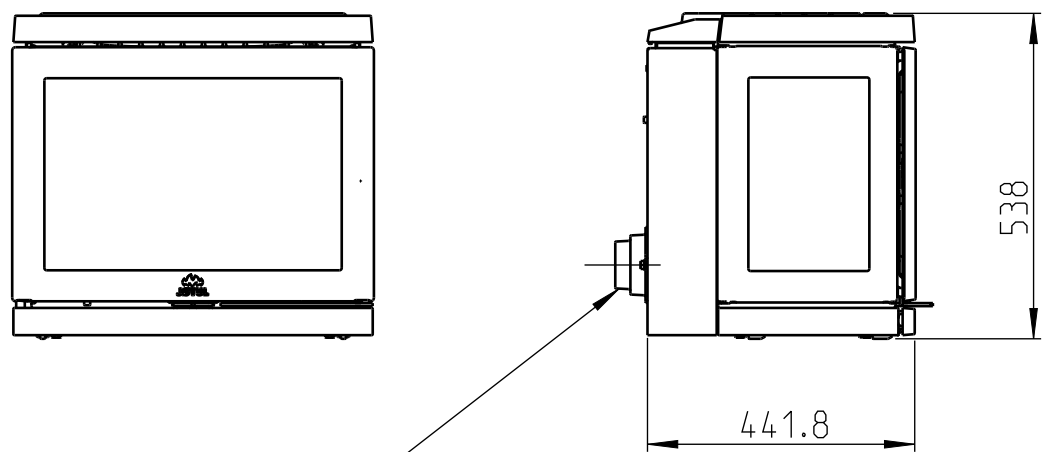
Rear outlet  
Only for HT



Min. dimensions for floor plate

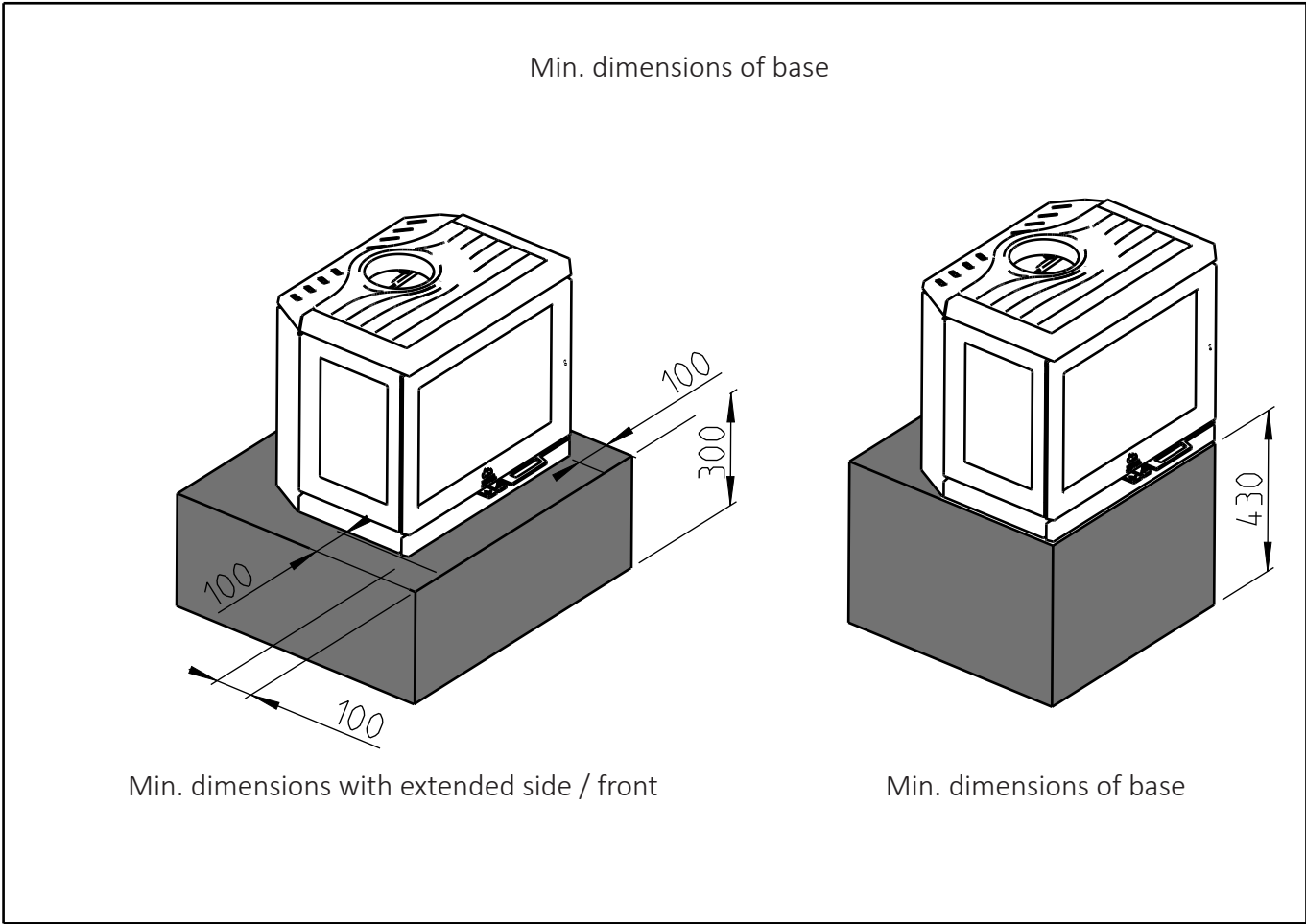
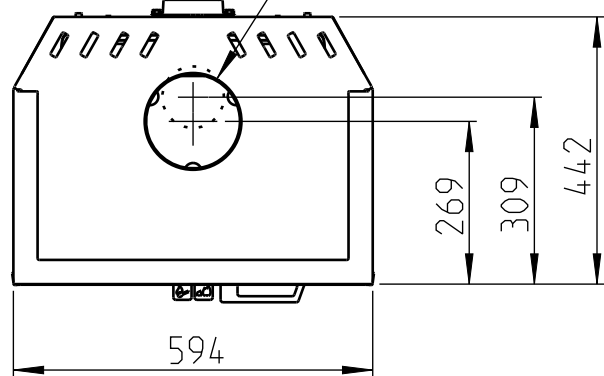
X/Y = in compliance with national laws and regulations

Jøtul F 520 LB

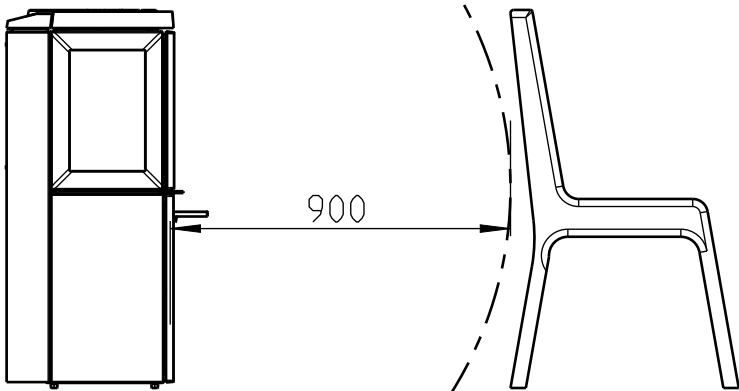
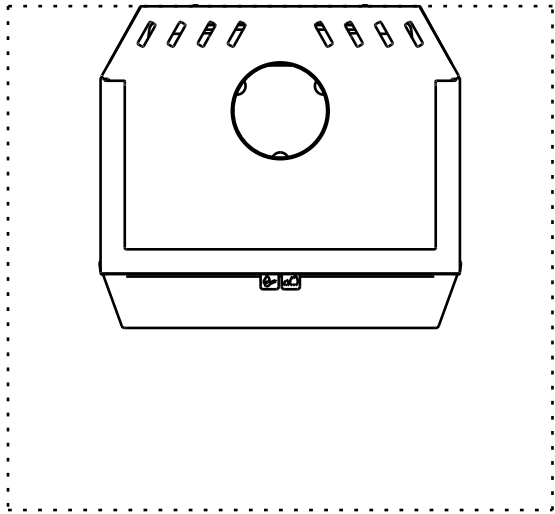


Hole in wall for outside air connection Ø80 / Ø100

Hole in floor/base for outside air connection Ø80 / Ø100




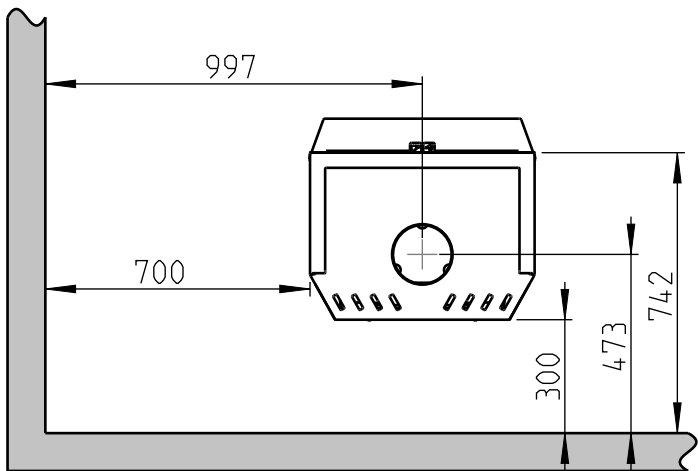
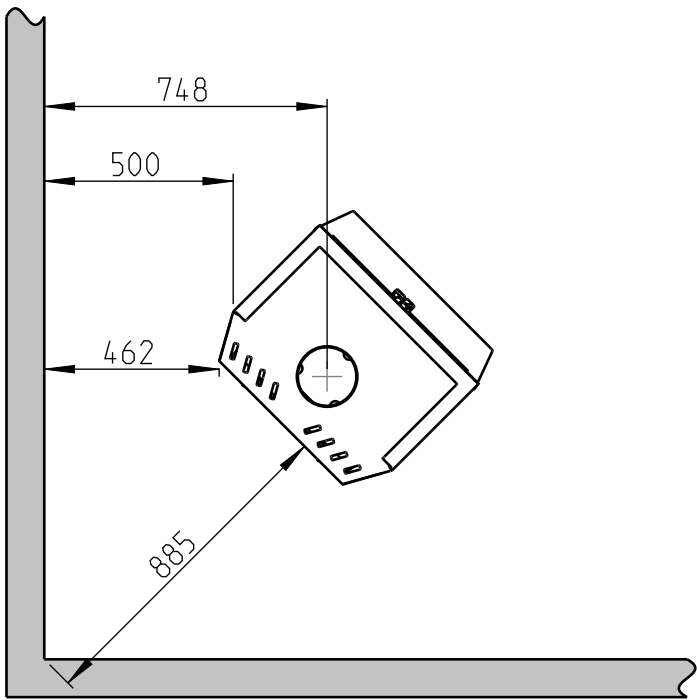
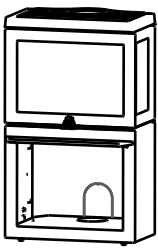
Minimum clearance from furniture/combustible materials



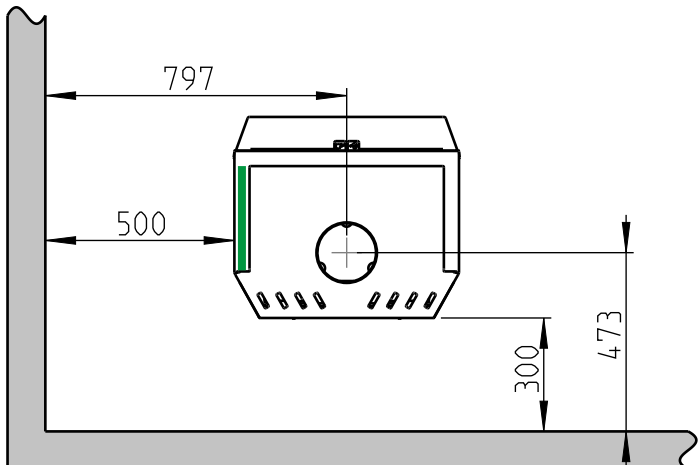
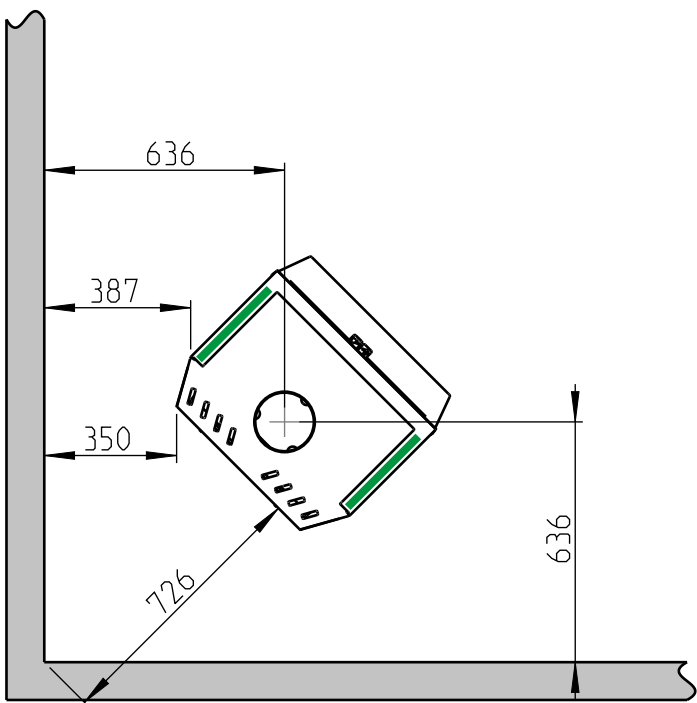
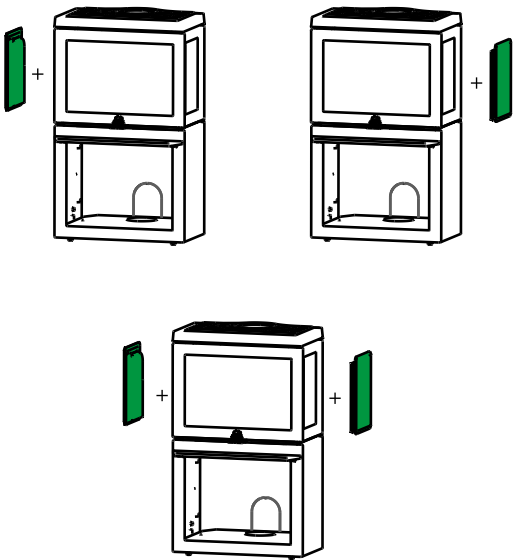
Min. dimensions for floor plate  
X/Y = in compliance with national laws and regulations

**F 520 / F 520 LB / F 520 HT :**  
Minimum distance to combustible wall

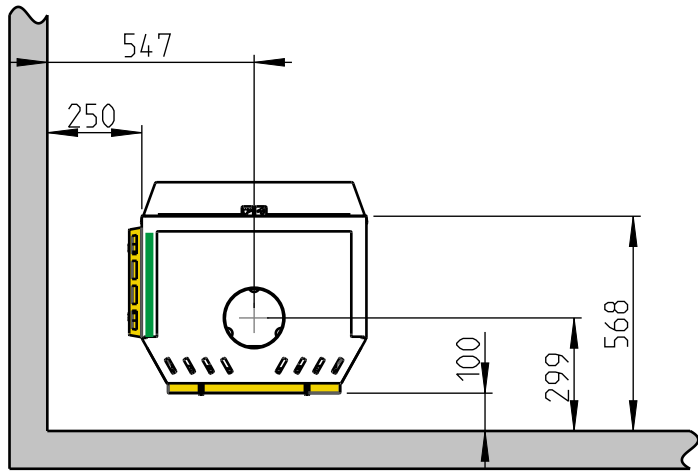
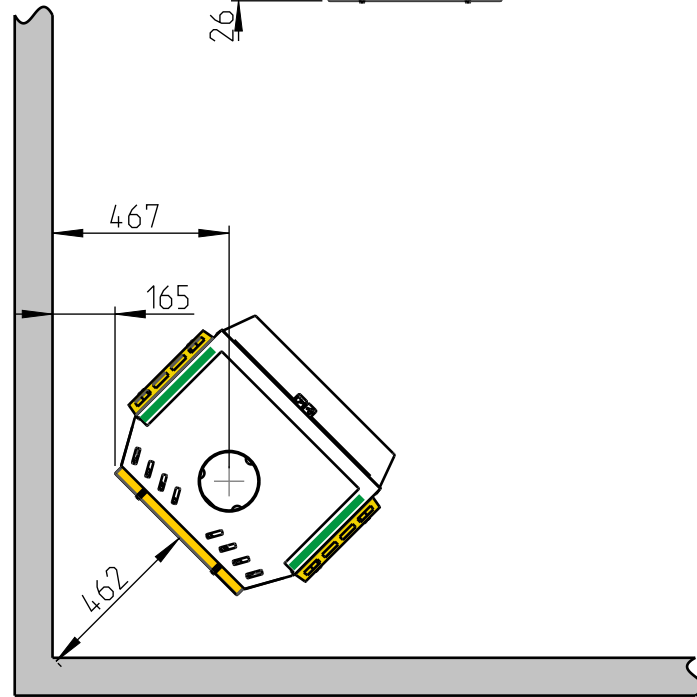
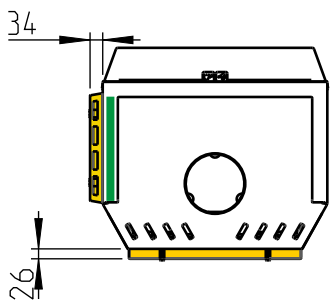
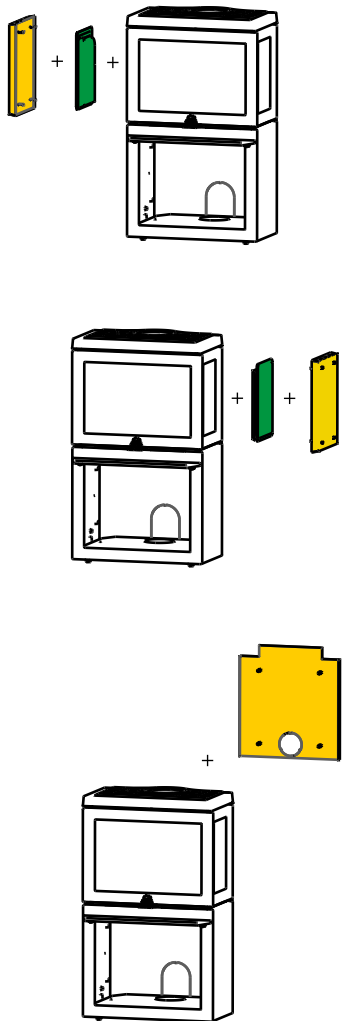
With semi-insulated chimney/shielded flue pipe all the way down to the product  Combustible wall

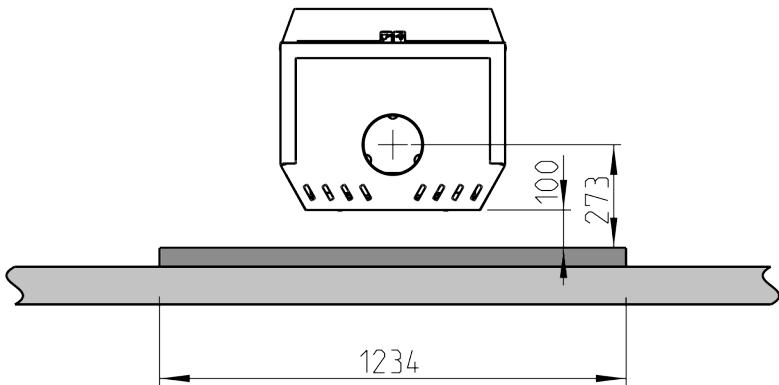
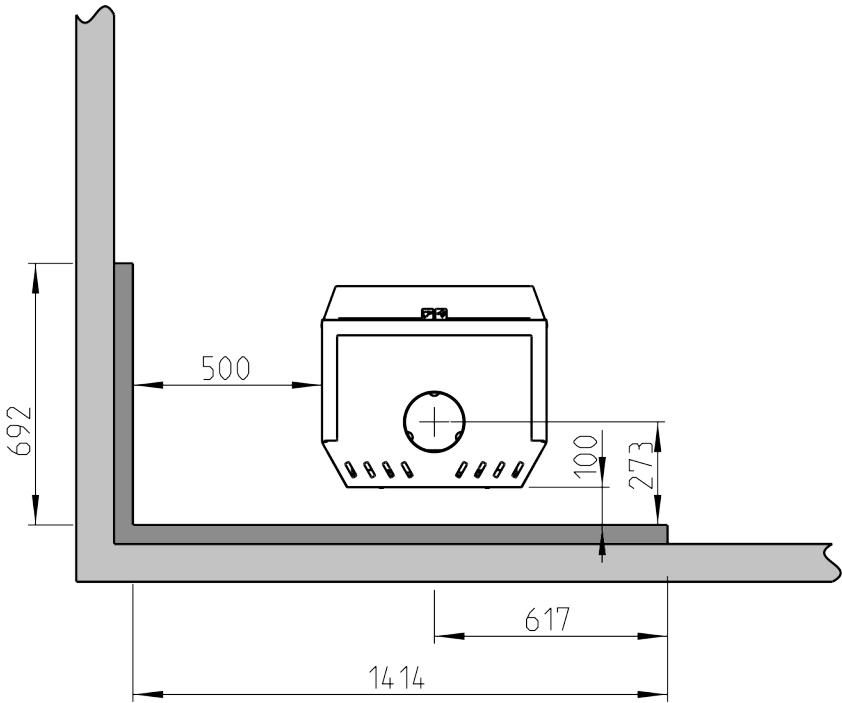
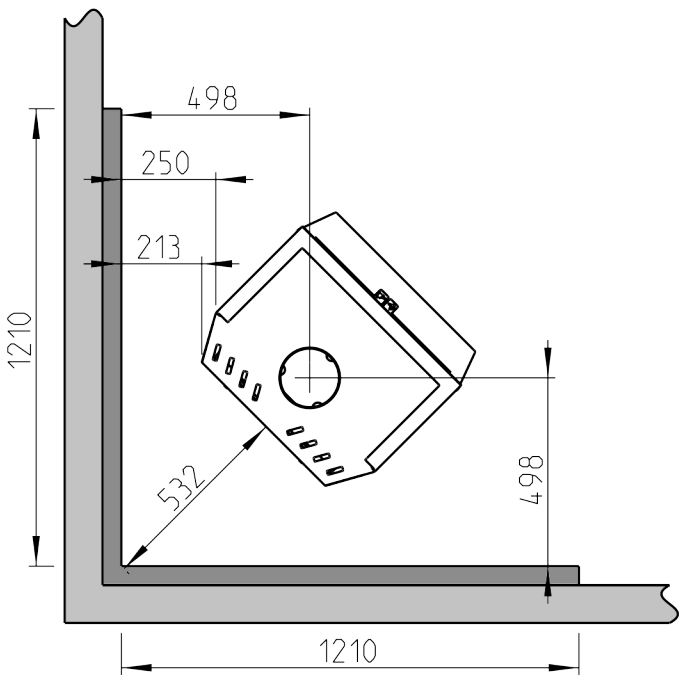
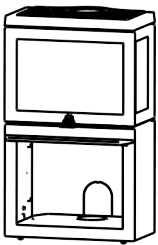


**F 520 / F 520 LB / F 520 HT**  
With retrofitted cast iron side



**F 520 / F 520 LB / F 520 HT**  
- With retrofitted cast iron side and convection kit side  
- With retrofitted convection kit rear





F 520 / F 520 LB / F 520 High Top:

With retrofitted cast iron side

